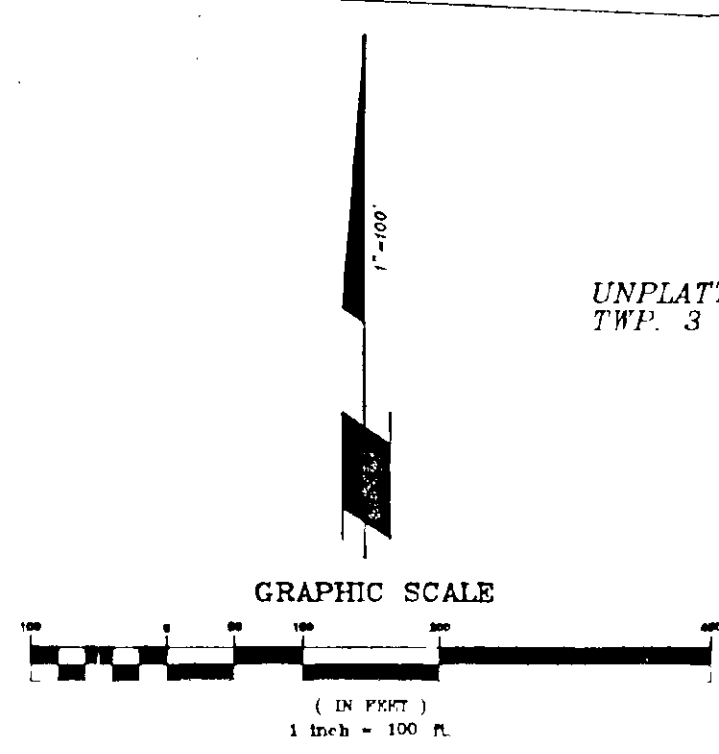
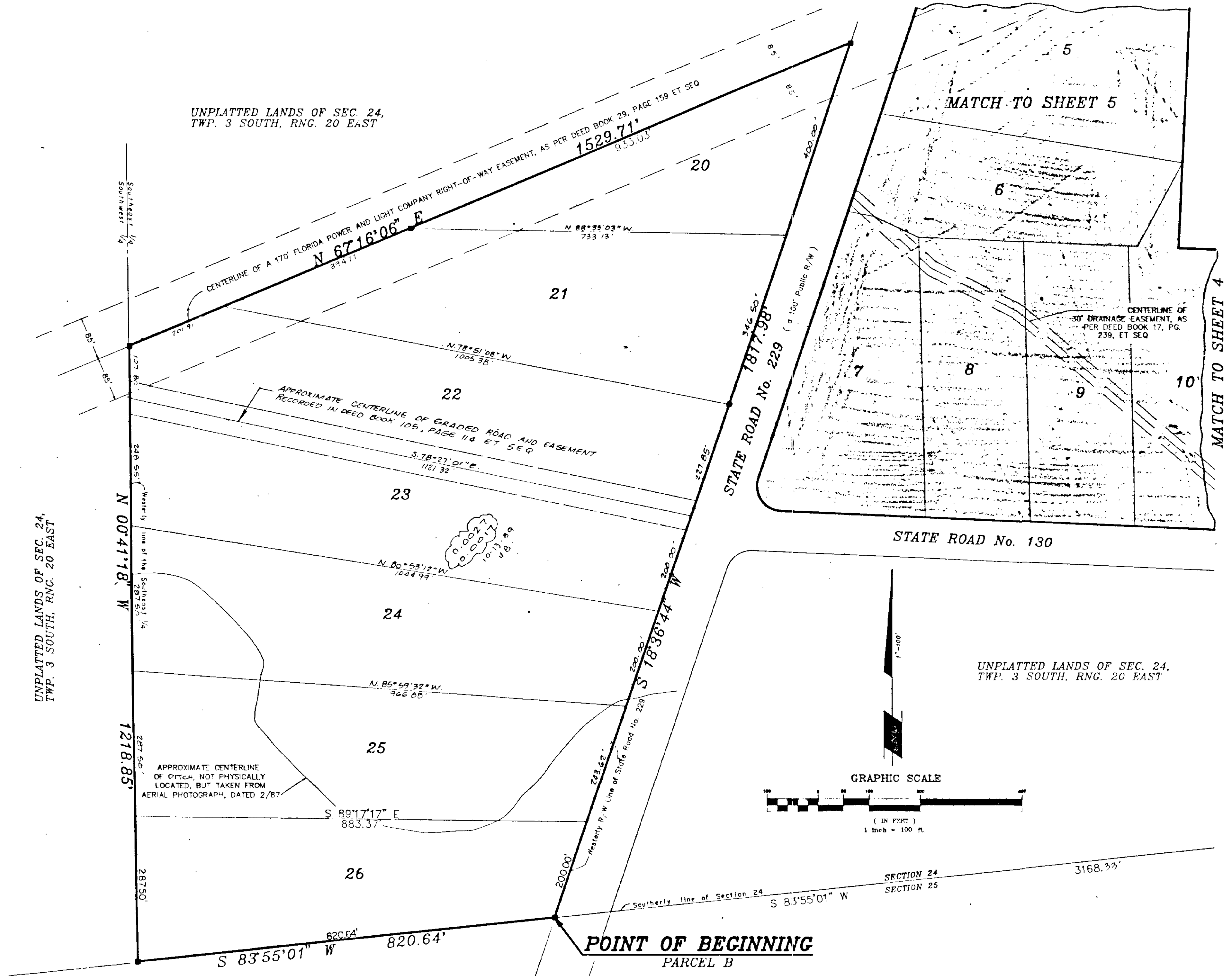


CONFEDERATE FARMS

A PORTION OF THE SOUTHEAST 1/4, OF SECTION 24, TOWNSHIP 3 SOUTH, RANGE 20 EAST, BAKER COUNTY, FLORIDA.

86B



UNPLATTED LANDS OF SEC. 24, TWP. 3 SOUTH, RNG. 20 EAST

UNPLATTED LANDS OF SEC. 25, TWP. 3 SOUTH, RNG. 20 EAST



Clary & Associates, Inc.
Professional Land Surveyors
5850 Crown Point Rd., Suite 4
Jacksonville, Florida 32217
(904) 260-2700