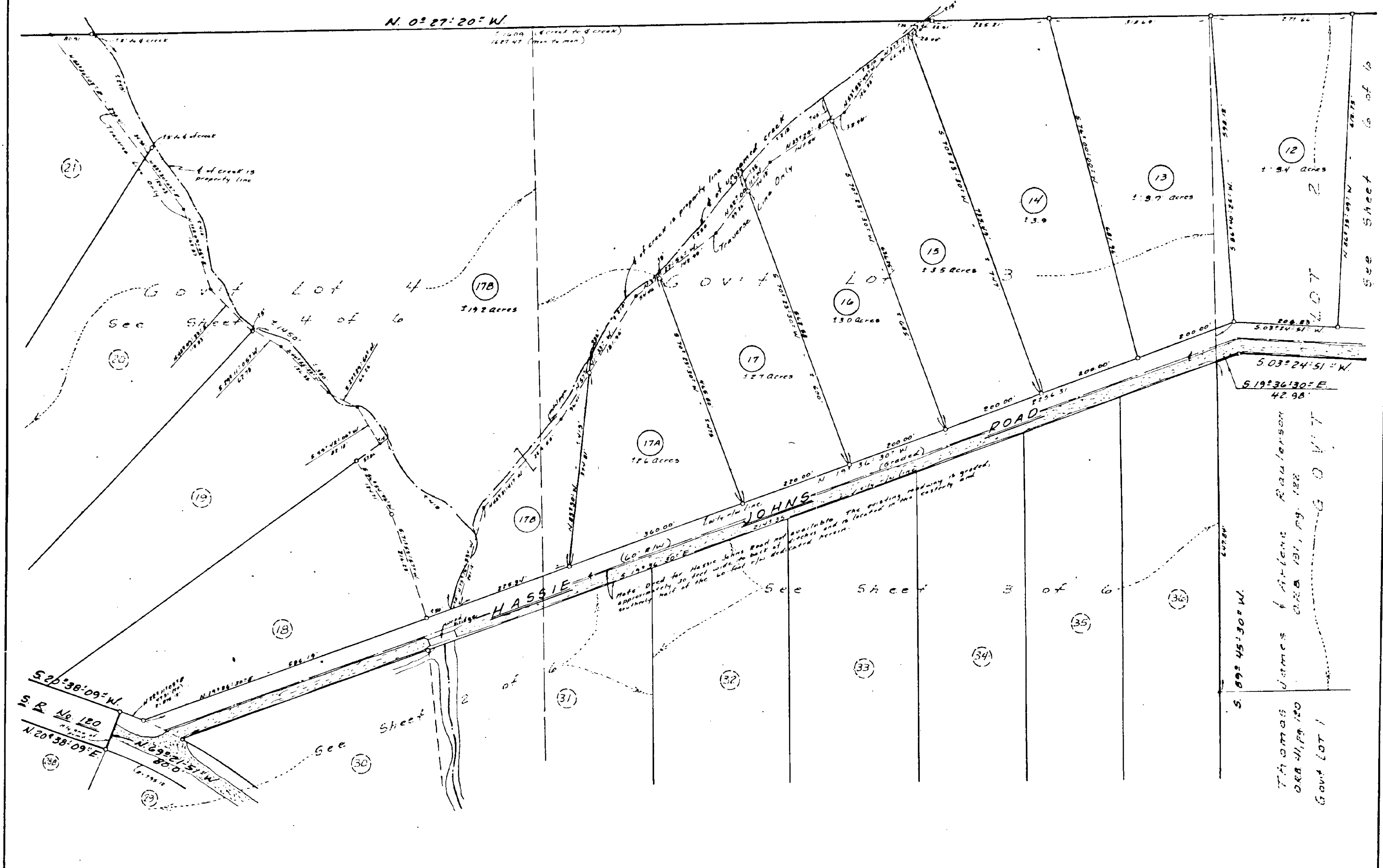
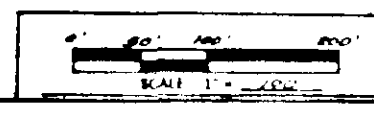


RIVERVIEW ACRES  
Being A Portion Of  
Sections 28 And 33, Township 1 North, Range 21 East,  
Baker County, Florida



SHÉET 5 OF 6



DATE JANUARY 2, 1922

PREPARED BY:  
FRITZ & ASSOC. OF FLA. INC.  
SURVEYORS & LAND PLANNERS  
2732 THUNDER BOLLIVARD  
JACKSONVILLE, FLORIDA 32211  
(904) 743-1900  
C.B. 1200V  
Drawing No. B-26-238(5)

