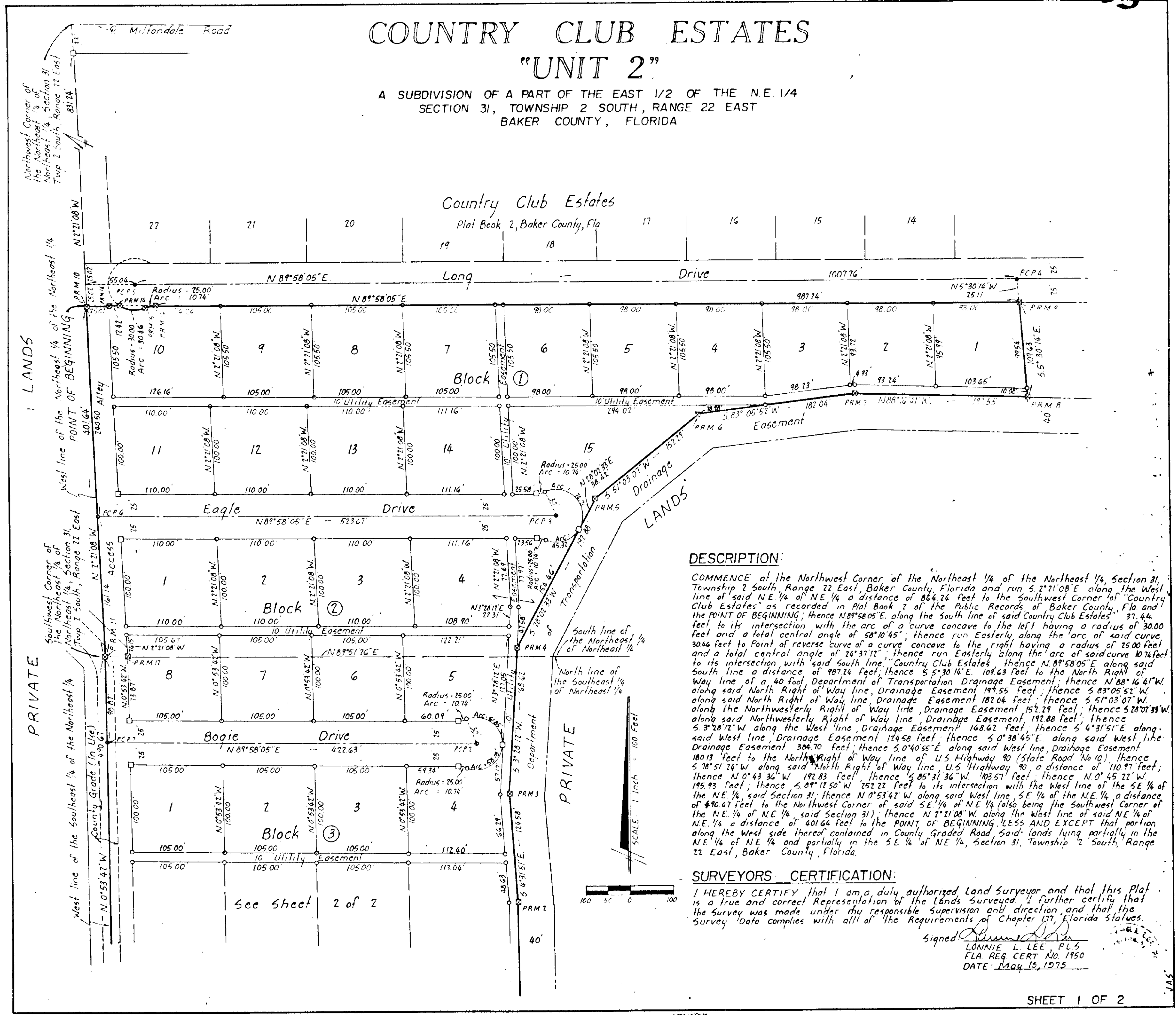


COUNTRY CLUB ESTATES

"UNIT 2"

A SUBDIVISION OF A PART OF THE EAST 1/2 OF THE N.E. 1/4 SECTION 31, TOWNSHIP 2 SOUTH, RANGE 22 EAST BAKER COUNTY, FLORIDA



DESCRIPTION:

COMMENCE at the Northwest Corner of the Northeast 1/4 of the Northeast 1/4, Section 31, Township 2 South, Range 22 East, Baker County, Florida and run S 2° 21' 08" E along the West line of said NE 1/4 of NE 1/4 a distance of 864.24 feet to the Southwest Corner of "Country Club Estates" as recorded in Plat Book 2 of the Public Records of Baker County, Fla. and the POINT OF BEGINNING; thence N 89° 58' 05" E along the South line of said Country Club Estates 37.44 feet to its intersection with the arc of a curve concave to the left having a radius of 30.00 feet and a total central angle of 24° 37' 11"; thence run Easterly along the arc of said curve 30.46 feet to Point of reverse curve of a curve concave to the right having a radius of 25.00 feet and a total central angle of 74° 37' 11"; thence run Easterly along the arc of said curve 10.74 feet to its intersection with said South line; thence N 89° 58' 05" E along said South line a distance of 987.24 feet; thence S 5° 30' 14" E 107.63 feet to the North Right of Way line of a 40 foot Department of Transportation Drainage Easement; thence N 88° 16' 41" W along said North Right of Way line, Drainage Easement 197.55 feet; thence S 83° 05' 53" W along said North Right of Way line, Drainage Easement 187.04 feet; thence S 57° 03' 07" W along the Northwesterly Right of Way line, Drainage Easement 152.29 feet; thence S 20° 01' 33" W along said Northwesterly Right of Way line, Drainage Easement 192.88 feet; thence S 3° 28' 12" W along the West line, Drainage Easement 168.62 feet; thence S 4° 31' 51" E along said West line, Drainage Easement 174.58 feet; thence S 0° 38' 45" E along said West line, Drainage Easement 324.70 feet; thence S 0° 40' 55" E along said West line, Drainage Easement 180.13 feet to the North Right of Way line of U.S. Highway 90 (State Road No. 10); thence S 78° 51' 24" W along said North Right of Way line, U.S. Highway 90 a distance of 110.97 feet; thence N 0° 43' 36" W 192.83 feet; thence S 85° 31' 36" W 103.57 feet; thence N 0° 45' 22" W 195.93 feet; thence S 89° 13' 50" W 252.22 feet to its intersection with the West line of the SE 1/4 of the NE 1/4 of NE 1/4, said Section 31; thence N 0° 53' 42" W along said West line, SE 1/4 of the NE 1/4 of NE 1/4 of NE 1/4 of NE 1/4, said Section 31; thence N 2° 21' 08" W along the West line of said NE 1/4 of NE 1/4 of NE 1/4 a distance of 401.64 feet to the POINT OF BEGINNING, LESS AND EXCEPT that portion along the West side thereof contained in County Graded Road, said lands lying partially in the NE 1/4 of NE 1/4 and partially in the SE 1/4 of NE 1/4, Section 31, Township 2 South, Range 22 East, Baker County, Florida.

SURVEYORS' CERTIFICATION:

I HEREBY CERTIFY that I am a duly authorized Land Surveyor and that this Plat is a true and correct Representation of the Lands Surveyed. I further certify that the Survey was made under my responsible Supervision and direction and that the Survey Data complies with all of the Requirements of Chapter 137, Florida Statutes.

Signed *Lonnie L. Lee*
 LONNIE L. LEE, P.L.S.
 FLA. REG. CERT. NO. 1150
 DATE: May 15, 1975