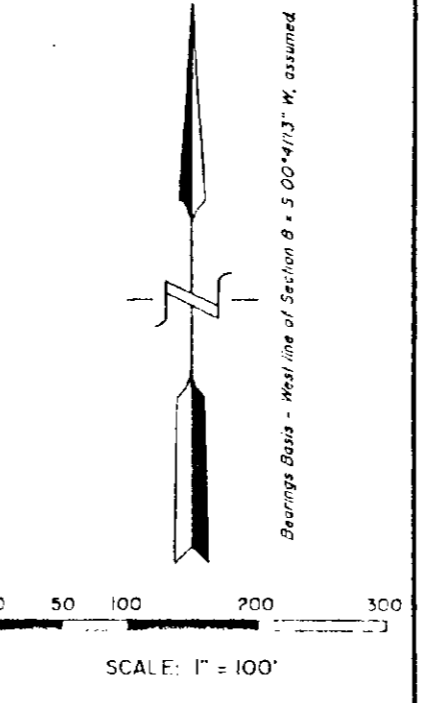
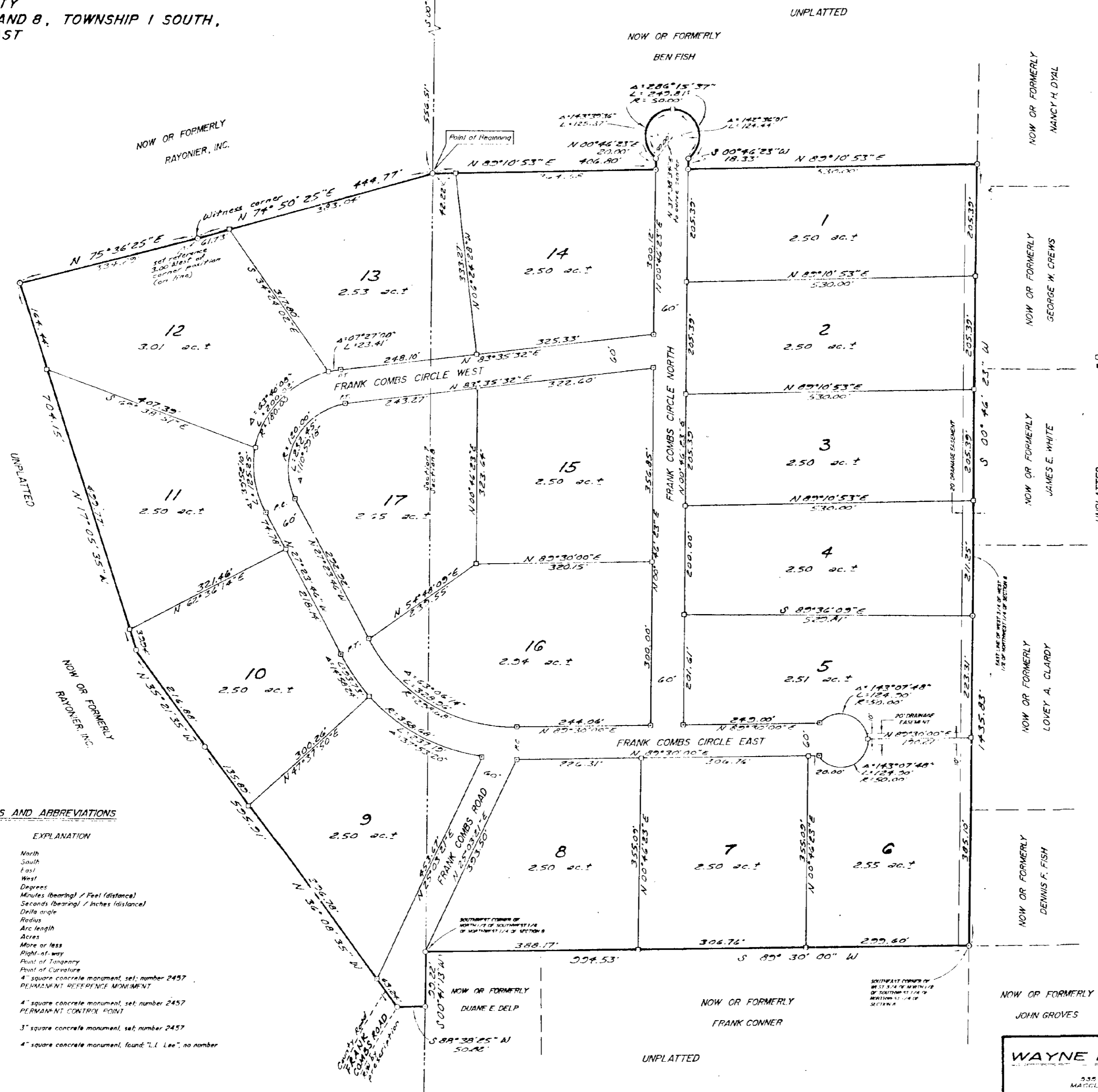


FRANK COMBS CIRCLE ESTATES

A SUBDIVISION IN:
STATE OF FLORIDA
BAKER COUNTY
SECTIONS 7 AND 8, TOWNSHIP 1 SOUTH,
RANGE 21 EAST

EXPLANATION OF SYMBOLS AND ABBREVIATIONS

SYMBOL / ABBREVIATION	EXPLANATION
N	North
S	South
E	East
W	West
°	Degrees
'	Minutes (bearing) / Feet (distance)
"	Seconds (bearing) / Inches (distance)
D	Delta angle
R	Radius
L	Arc length
Δ	Area
±	More or less
±	Right-of-way
R/W	Right-of-way
P.T.	Point of Tangency
P.C.	Point of Curvature
4" square concrete monument, set number 2457	PERMANENT CONTROL POINT
4" square concrete monument, set number 2457	PERMANENT CONTROL POINT
3" square concrete monument, set number 2457	PERMANENT CONTROL POINT
4" square concrete monument, found "L.I. Lee", no number	PERMANENT CONTROL POINT



WAYNE B. DUKES, P.L.S.
355 SOUTH 4th STREET
MACLENNY, FLORIDA 32063

