

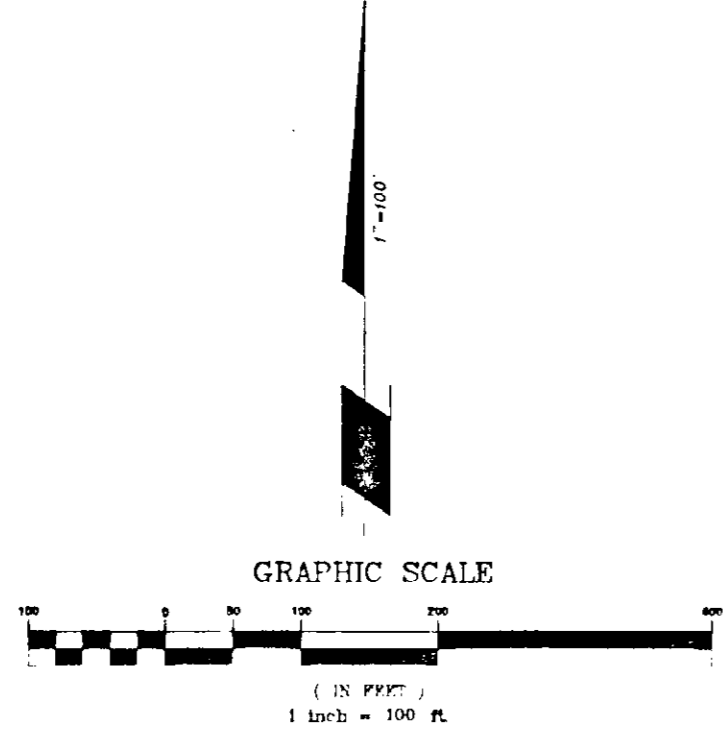
CONFEDERATE FARMS

A PORTION OF THE SOUTHEAST 1/4, OF SECTION 24, TOWNSHIP 3 SOUTH, RANGE 20 EAST, BAKER COUNTY, FLORIDA.

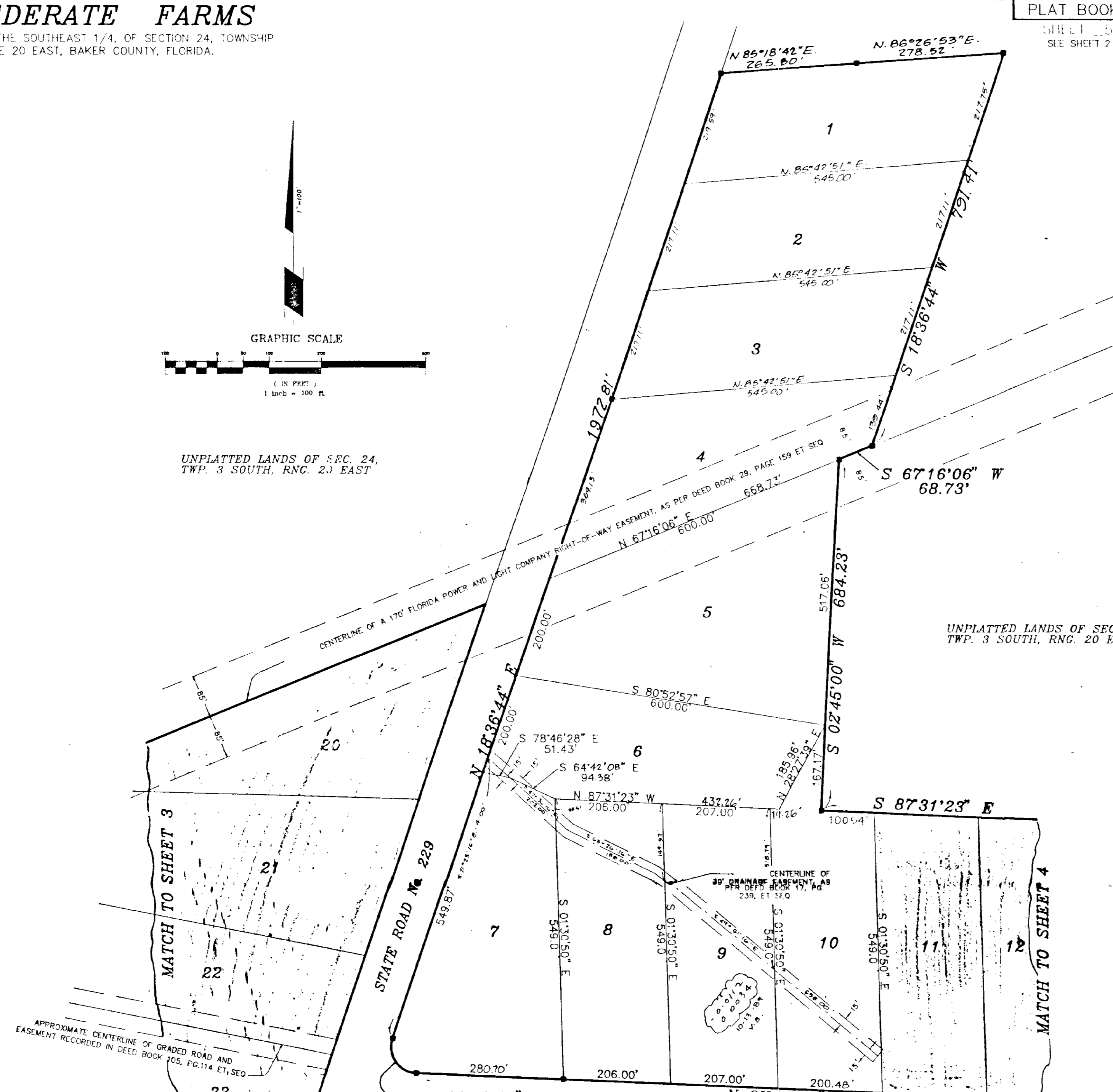
PLAT BOOK 2 PAGE 2

SHEET 3 OF 5 SHEETS
SEE SHEET 2 OF 5 FOR GENERAL NOTES

86D



UNPLATTED LANDS OF SEC. 24,
TWP. 3 SOUTH, RNG. 20 EAST



UNPLATTED LANDS OF SEC. 24,
TWP. 3 SOUTH, RNG. 20 EAST

APPROXIMATE CENTERLINE OF GRADED ROAD AND
EASEMENT RECORDED IN DEED BOOK 105, PG. 114 ET SEQ

$\Delta = 106^{\circ}08'07''$
 $R = 50.00'$
 $L = 92.62'$
 $CH. = N 34^{\circ}27'19'' W$
 $79.93'$

STATE ROAD No. 130 (on 80' Public R/W) Northernly R/W Line of State Road No. 130



Clary & Associates, Inc.
Professional Land Surveyors
5830 Crown Point Rd., Suite A
Jacksonville, Florida 32217
(904) 290-2700