

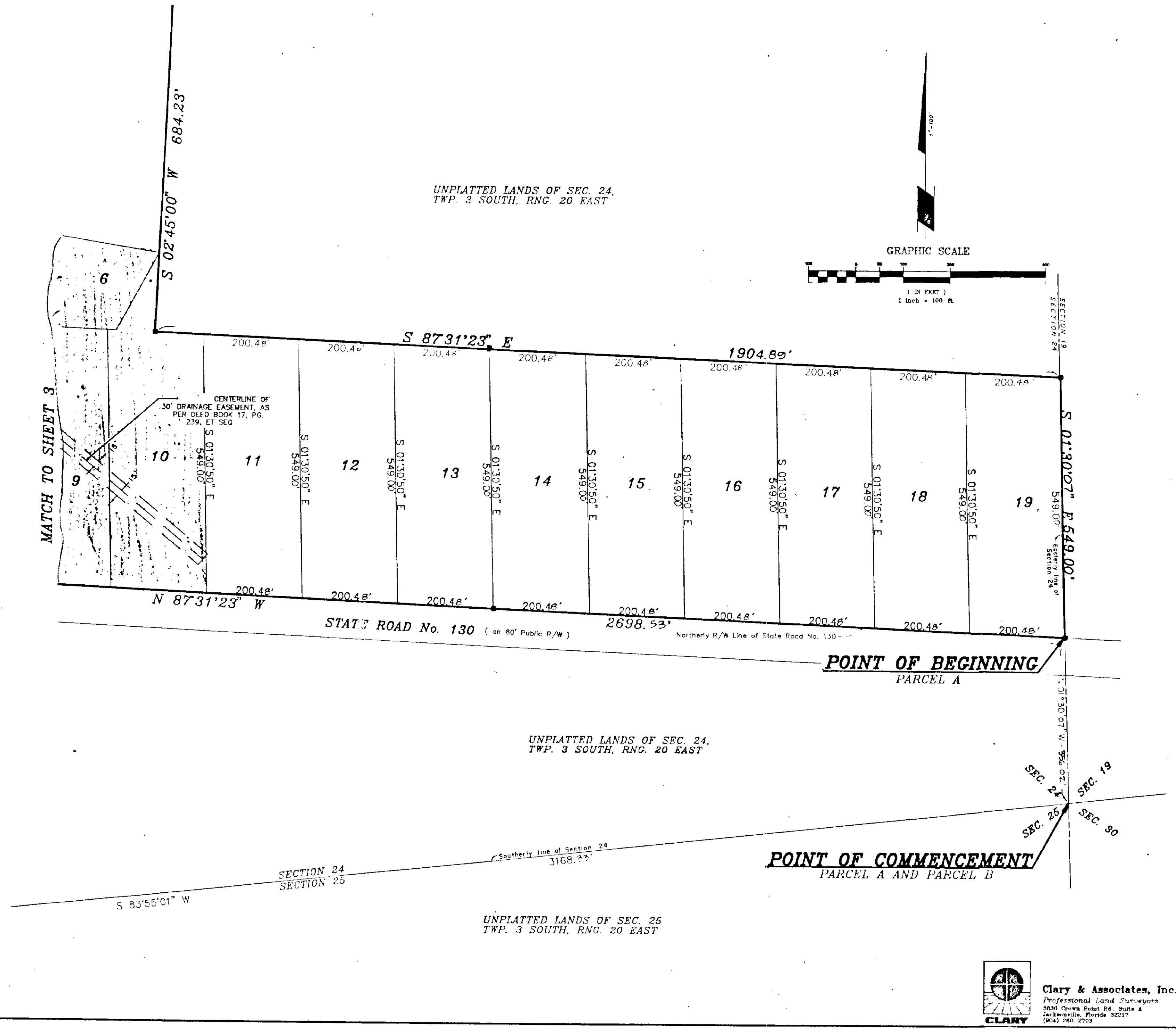
86C

CONFEDERATE FARMS

A PORTION OF THE SOUTHEAST 1/4, OF SECTION 24, TOWNSHIP 3 SOUTH, RANGE 20 EAST, BAKER COUNTY, FLORIDA.

PLAT BOOK 2 PAGE 200

SHEET 4 OF 5 SHEETS
SEE SHEET 2 OF 5 FOR GENERAL NOTES



Clary & Associates, Inc.
 Professional Land Surveyors
 3830 Crown Point Rd., Suite A
 Jacksonville, Florida 32217
 (904) 260-2705