

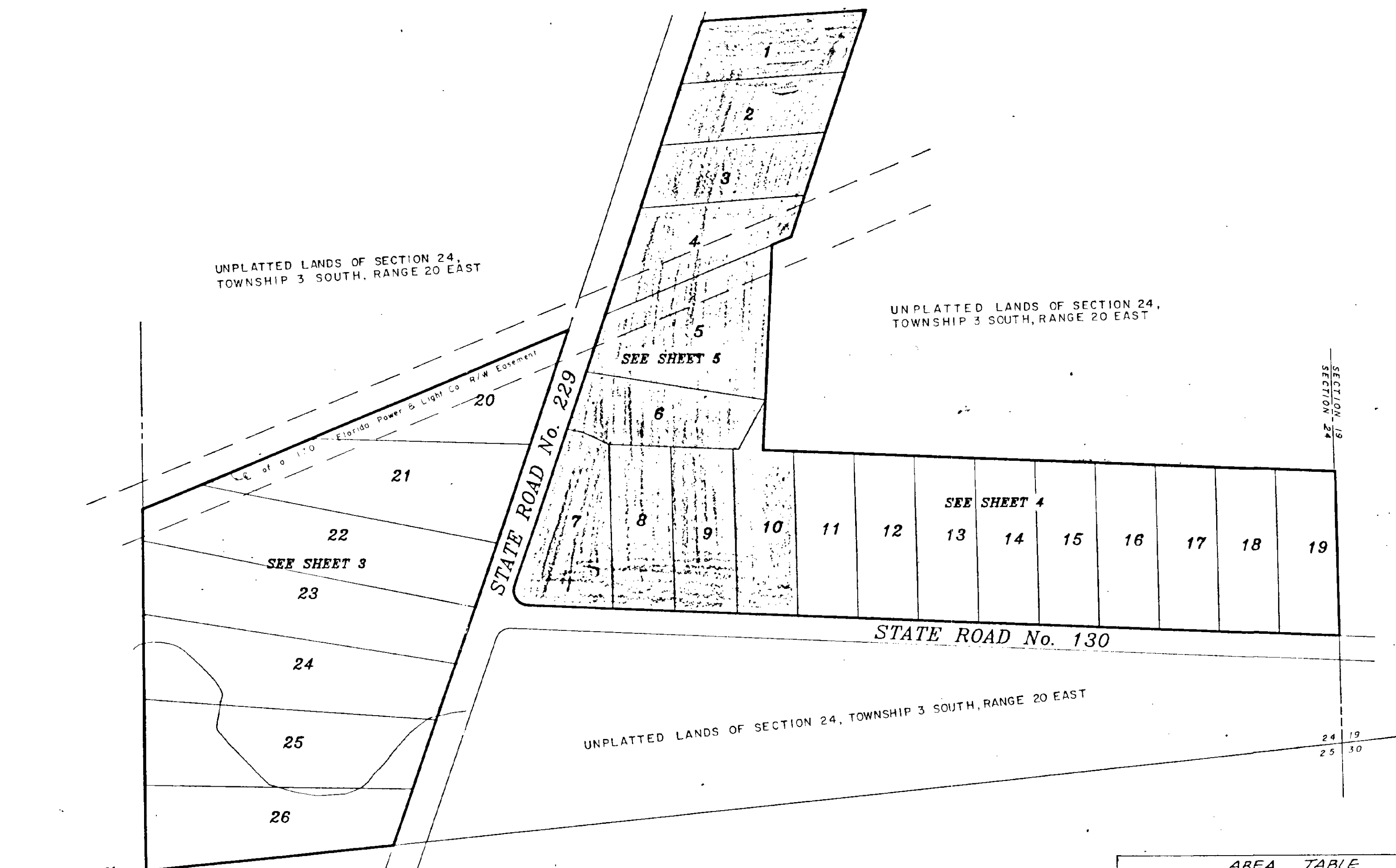
86A

CONFEDERATE FARMS

A PORTION OF THE SOUTHEAST 1/4, OF SECTION 24, TOWNSHIP 3 SOUTH, RANGE 20 EAST, BAKER COUNTY, FLORIDA.

PLAT BOOK 2 PAGE 244

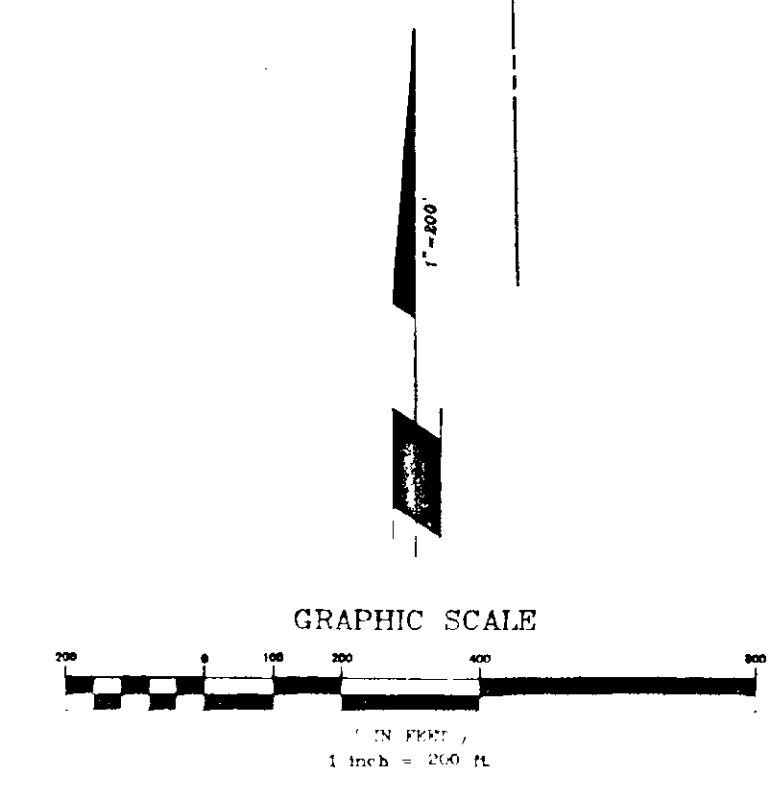
SHEET 2 OF 5 SHEETS
TOTAL NUMBER OF LOTS THIS UNIT - 26



LOT	SQUARE FOOTAGE	LOT	SQUARE FOOTAGE
1	110,	14	109,800
2	109,000	15	109,800
3	109,000	16	109,800
4	127,667	17	109,800
5	129,207	18	109,800
6	117,649	19	109,800
7	133,268	20	140,096
8	112,821	21	231,983
9	113,369	22	246,481
10	116,543	23	239,253
11	109,800	24	241,588
12	109,800	25	240,917
13	109,800	26	201,505

- GENERAL NOTES**
- 1) Bearings shown herein are based on the South line of Section 24, Township 3 South, Range 20 East, or South 83°55'01" West, (assumed datum).
 - 2) NOTICE: There may be additional restrictions that are not recorded on this plat, however, they may be found in the Public Records of Baker County, Florida.
 - 3) ■ Denotes permanent reference monuments.
 - 4) All the lands shown herein are subject to the covenants and restrictions for Confederate Farms, as recorded in Official Records volume _____, page _____ of the public records of Baker County, Florida.
 - 5) Building restriction lines shall conform to current zoning regulations of Baker County, Florida.
 - 6) NO SPECIFIC IRRIGATION CAN BE BUILT CLOSER THAN 75 FEET TO THE CENTERLINE OF ANY EXISTING DITCH.

KEY MAP
1" = 200'



Clary & Associates, Inc.
Professional Land Surveyors
3830 Crown Point Rd., Suite A
Jacksonville, Florida 32217
(904) 280-2703