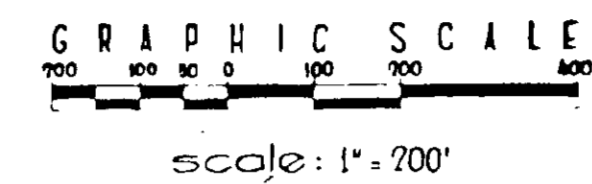
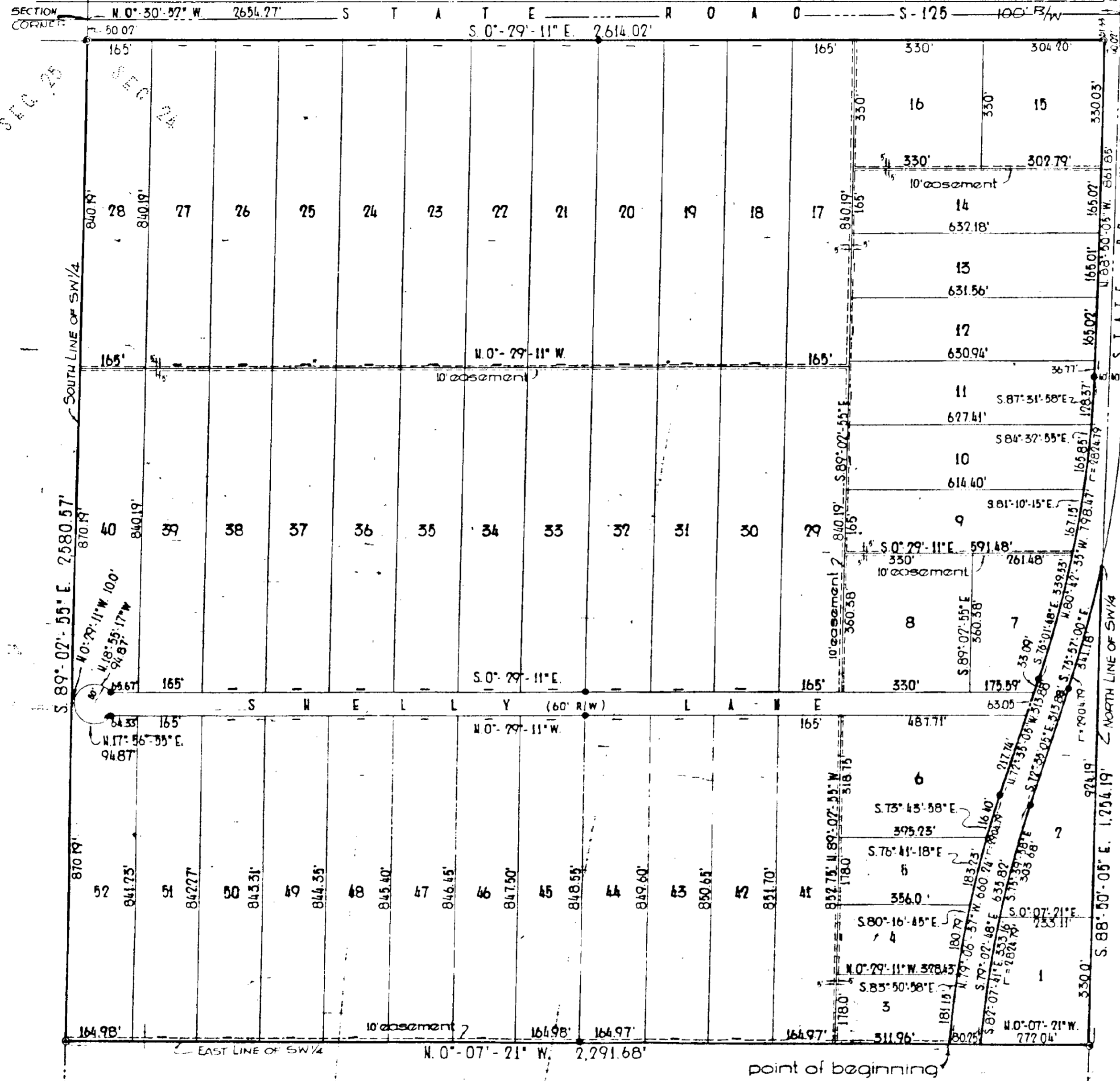


# MacCLENNY ACRES

BOOK PAGE

39



*COVENANTS AND RESTRICTIONS in O.R. 17 page 162 THANKS 18-109 ROW*

- notes
- 1.) all bearings and distances shown on curves are chord bearings and distances.
  - 2.) all building restriction lines shall not be less than 25 feet from all street lines.
  - 3.) all easements shown here-on are for drainage and utilities.
  - 4.) ● denotes permanent reference monuments.
  - 5.) ○ denotes permanent control points.

*Charles R. Bennett*

