

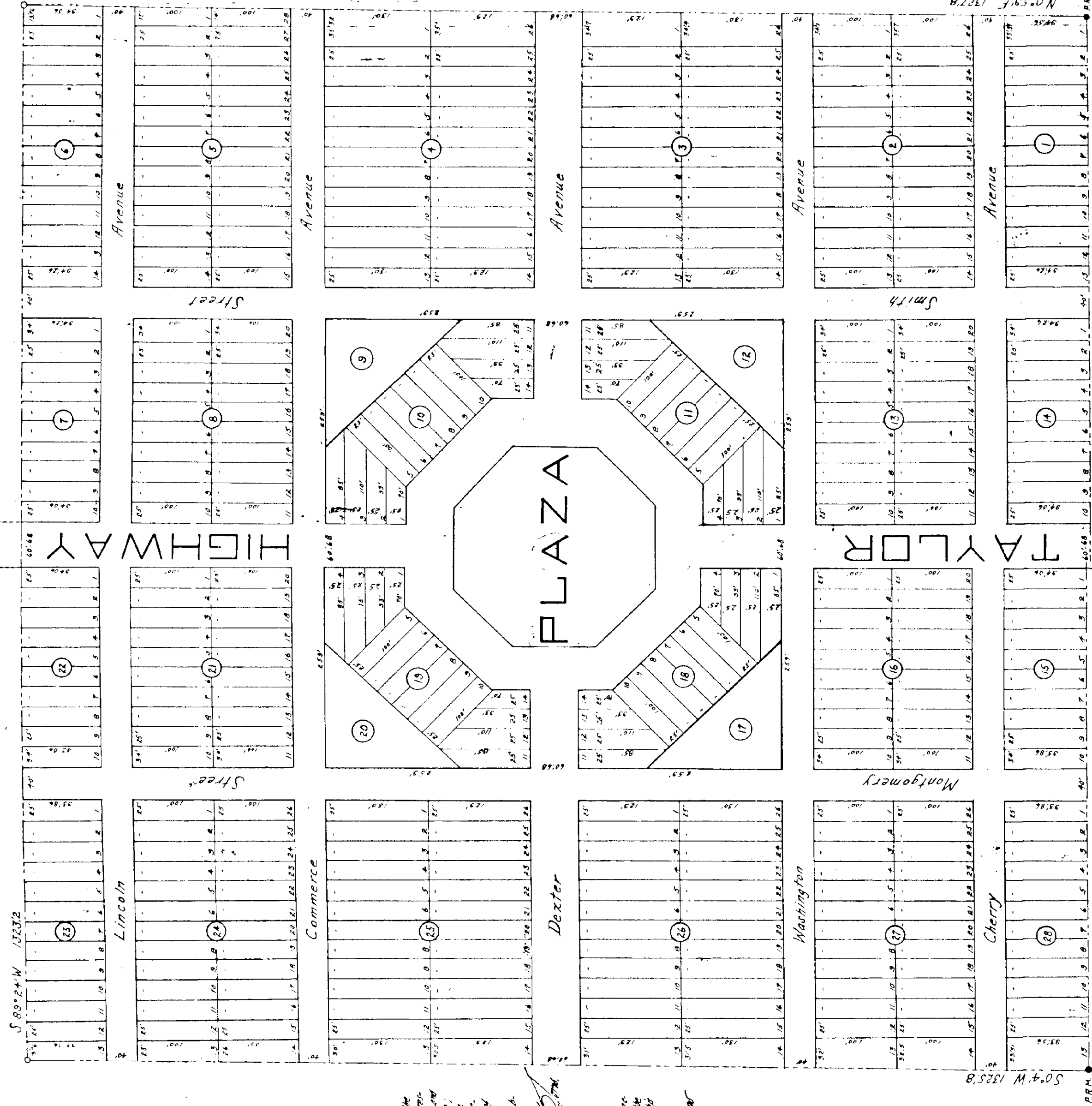
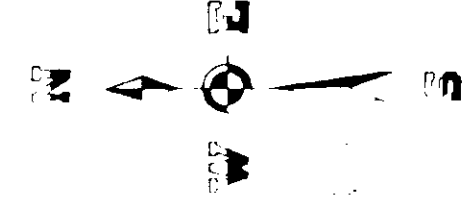
TUSKEGEE ESTATES

ON THE LITTLE ST MARYS

SCALE = 66 2/3 FEET

F L O R I D A

SECTION 22 T-1-S R-20-E



This is to certify that the above plat is a correct representation of the land surveyed and subdivided and described above, and that permanent monuments and their permanent reference points are being placed at the corners of lots of the City of Miami, D. C. 1934.

Edwin P. DeLoach
City Engineer

This plat has been made in conformity with the instructions of the Board of Survey, A. D. 1934.

Frank J. DeLoach
Deputy

Radius of curve circumscribed by the arc - 140.0.
 Perpendicular from center of arc to chord - 120.0.
 Area of polygon in acres - 1.40.
 Area of lots - 578.48.
 Number of lots in tracts - 433.
 Total number of acres in tract - 46.33.
 Area of blocks No. 3, 12, 17 and 18 in acres, each - 0.77.

Wm. B. Burg
A. B. Burg
Not Public

Harry Plunk
City of Miami

Wm. B. Burg
City of Miami

Examined and approved this 13th day of February, A. D. 1934; Board of County Commissioners of Baker County, Florida.

Lee K. Bradley
Chairman
Wm. B. Burg
Not Public

I hereby certify that this plat has been examined and that it complies in form with Chapter No. 10203, Laws of Florida of 1933, and is filed for record and release in Plat Book No. 1, Page 42, of the Public Records of Baker County, Florida, this 13th day of February, A. D. 1934.

Wm. B. Burg
City of Miami