

E. DOBSON PROPERTY

OLUSTEE

SEC.-29-T3S-R19E

PLAT Book #1
PAGE #23

ADOPTION AND DEDICATION

This is to certify that the undersigned is the lawful owner of the lands described in the caption hereof; that he has caused the same to be surveyed and subdivided; that this Plat, made in accordance with said survey, is hereby adopted as the true and correct plat of said lands; and that the streets shown and named on the plat are irrevocably and unreservedly dedicated to the County of Baker and its successors.

In testimony and in witness whereof, these presents are signed on this second day of November, A.D. 1926

E. Dobson
M. J. Dobson

Signed and sealed in our presence as witnesses:
Lessa Mc Gault
T. H. Robinson

12 MILES TO LAKE CITY.
135 " " " TILLAMUSSET

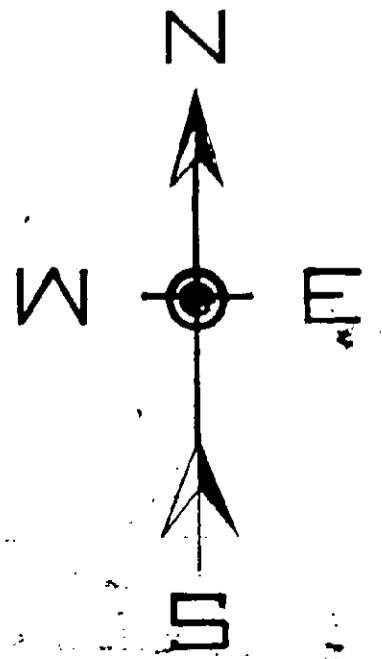
State of Florida } ss
County of Baker }

This is to certify that E. Dobson and M. J. Dobson, his wife, personally appeared before me on this 2nd day of November A.D. 1926, stated and acknowledged the foregoing instrument for the purposes set forth therein; and the said M. J. Dobson, being questioned separate and apart from her husband, expressed her approval of said adoption and dedication and confessed the same to be her free act, made of her own accord; and that she hereby relinquishes all claims, rights, and interests, statutory or equitable, in and to said streets hereby dedicated.

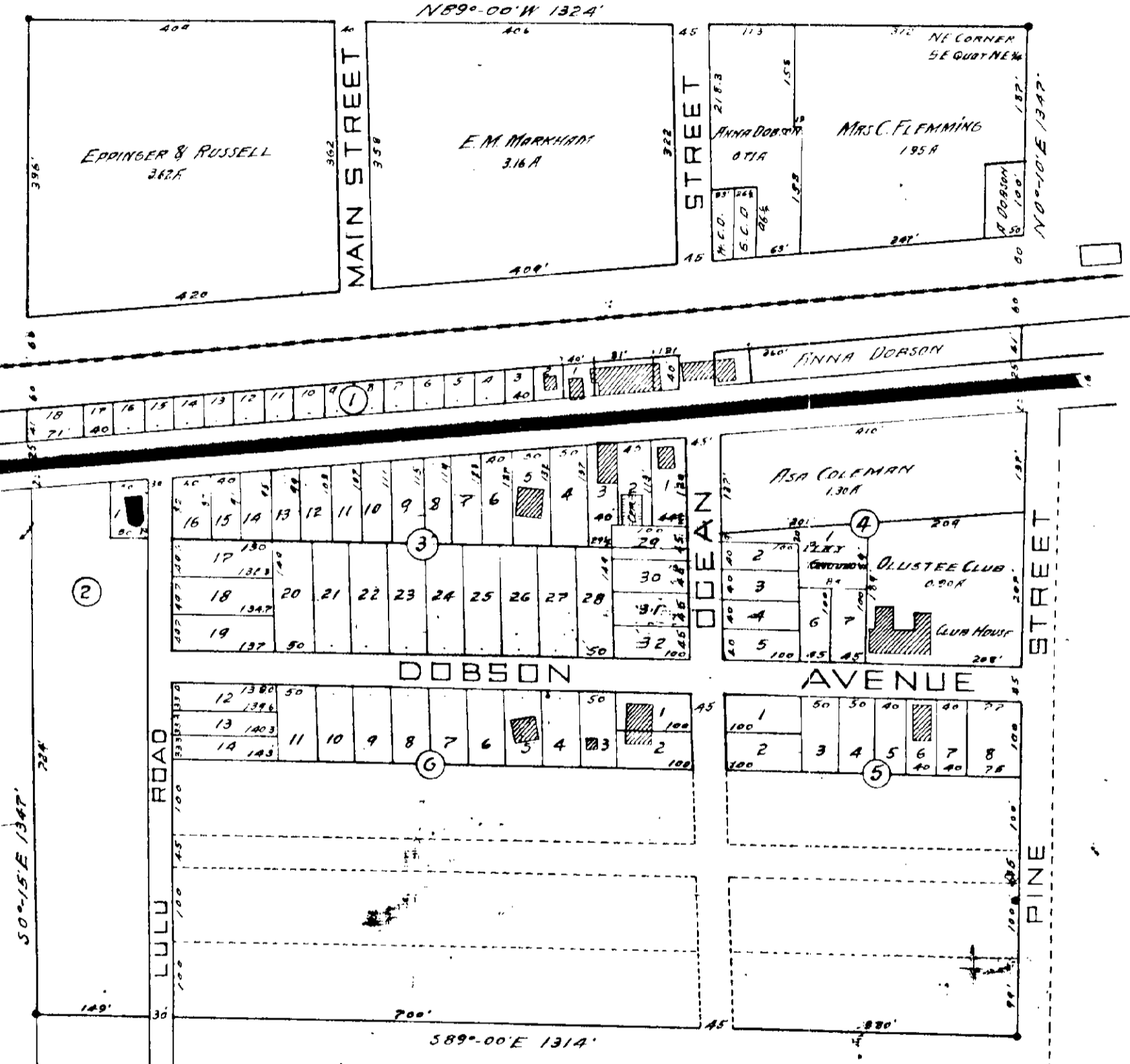
Subscribed and sworn to before me on this second day of November, A.D. 1926.

Walter A. Gorman
Notary Public

My Florida commission expires on the 3rd day of February, A.D. 1929



MAGNETIC VARIATION 1° 30' E



RAILROAD AND TELEGRAPH STATION
SEABOARD AIR LINE RAILROAD

FLORIDA NATIONAL HIGHWAY No. 1
45 MILES TO JACKSONVILLE
20 MILES TO MACLENNY

COMMISSIONER'S APPROVAL:

This Plat was examined and approved on this fourth day of November, A.D. 1926, by the Board of County Commissioners for Baker County, State of Florida

W. C. Thompson
Chairman of the Board
Attest: W. C. Thompson
Clerk of the County Court

FILING RECORD:

I hereby certify that this Plat has been examined and that I find it conforms with Chapter No 10275, Laws of Florida of 1925, and it is therefore accepted for record and hereby recorded in Plat Book No 1 of Page of the Public Records of Baker County, Florida, on this 4th day of November, A.D. 1926.

W. C. Thompson
Clerk of the County Court

ENGINEER'S CERTIFICATE:

I hereby certify that the above Plat is a correct representation of the south-east Quarter of the North-east Quarter of Section Twenty-nine (29) Township Three (3) South Range Nineteen (19) East, in the town site of Olustee, Baker County, Florida; that E. Dobson is the owner of all the Numbered Lots between the railroad and highway rights-of-way and all the lands south of said quarter except as otherwise indicated; that permanent reference monuments have been placed at the four corners of said quarter, as indicated on the Plat, according to the Laws of the State of Florida enacted in the year of 1926. The dotted lines indicate possible future extensions.

Signed at Macleenny, Florida, on this 2nd day of November, A.D. 1926.
Jenkins N. Jones
Civil Engineer.

SCALE

1" = 100'